

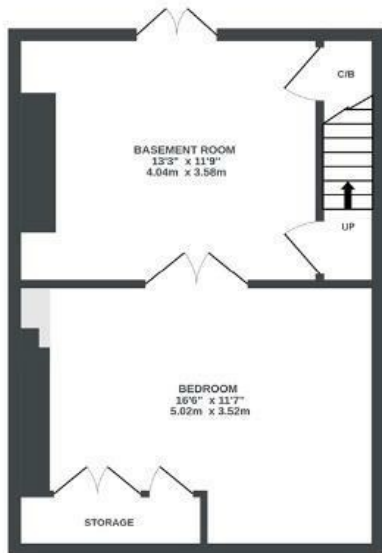
# Picton Street

## MONTPELIER

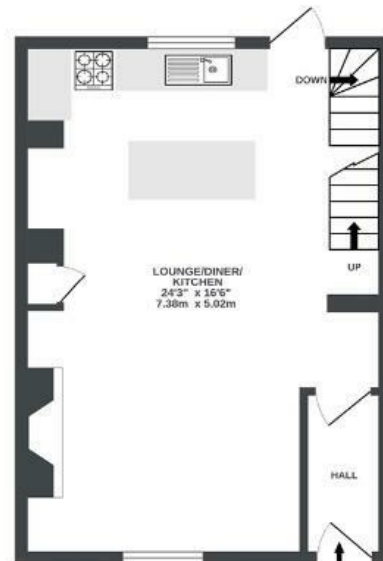
APPROXIMATE FLOOR AREA  
140.7 SQM / 1514 SQFT



LOWER GROUND FLOOR  
379 sq. ft. (35.2 sq.m.) approx.



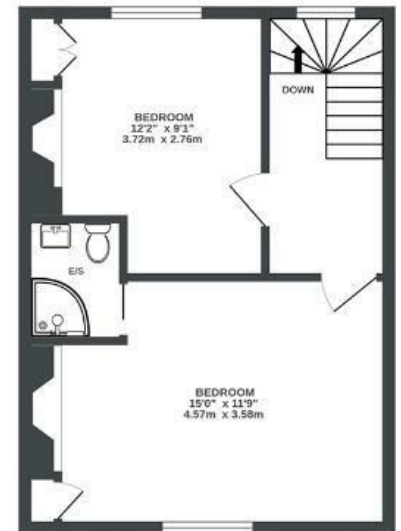
GROUND FLOOR  
383 sq. ft. (35.6 sq.m.) approx.



1ST FLOOR  
369 sq. ft. (34.2 sq.m.) approx.



2ND FLOOR  
383 sq. ft. (35.6 sq.m.) approx.



Illustrations are for reference purposes only, measurements are approximate, not to scale.

~~Boardwalk~~

# Picton Street

, BRISTOL



£650,000



4 Bedrooms



BS6 5PZ



1 Bathrooms

*"My home on Picton Street has always felt like a remarkably tranquil sanctuary amidst (or just on the outskirts of) the 'hustle and bustle' of Stokes Croft and the City Centre. It's within walking distance of pretty much all the best parts of the city in my opinion, from nightlife and shopping in and around Stokes Croft, the city centre, and Gloucester Road, to some of Bristol's most beautiful parks such as St Andrew's, Narroways Nature Reserve, Purdown, Brandon Hill, or Castle Park."*

